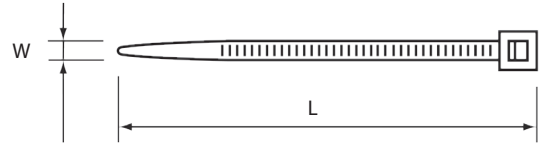


## Plastik Kablo Bağları

Plastic Cable Ties



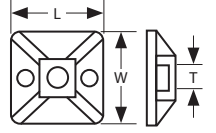
| Ürün Kodu<br>Product Code | Ürün Adı<br>Product Name    | Ölçüler<br>(BoyxEn)<br>Dimensions<br>(LxW) (mm) | Maks. Sıkma<br>Çapı<br>Max. Bundle<br>Dia. (mm) | Min. Açılma<br>Mukavemeti<br>Min. Loop Tensile<br>Strength (kg.) | Amb. Mik.<br>Pack. Qty<br>(Adet/Pcs.) | Koli Mik.<br>Carton Qty.<br>(Adet/Pcs.) |
|---------------------------|-----------------------------|---|---|--|---------------------------------------|---|
| 8016330109                | PCT 100 x 2.5 Beyaz / White | 100 x 2.5                                       | 22  | 8  | 100                                   | 26.000                                  |
| 8016330110                | PCT 100 x 2.5 Siyah / Black | 100 x 2.5                                       | 22  | 8  | 100                                   | 26.000                                  |
| 8016330209                | PCT 150 x 2.5 Beyaz / White | 150 x 2.5                                       | 35  | 8  | 100                                   | 20.000                                  |
| 8016330210                | PCT 150 x 2.5 Siyah / Black | 150 x 2.5                                       | 35  | 8  | 100                                   | 20.000                                  |
| 8016330309                | PCT 200 x 2.5 Beyaz / White | 200 x 2.5                                       | 55  | 8  | 100                                   | 18.000                                  |
| 8016330310                | PCT 200 x 2.5 Siyah / Black | 200 x 2.5                                       | 55  | 8  | 100                                   | 18.000                                  |
| 8016330409                | PCT 140 x 3.6 Beyaz / White | 140 x 3.6                                       | 36  | 18   | 100                                   | 12.000                                  |
| 8016330410                | PCT 140 x 3.6 Siyah / Black | 140 x 3.6                                       | 36  | 18   | 100                                   | 12.000                                  |
| 8016330509                | PCT 200 x 3.6 Beyaz / White | 200 x 3.6                                       | 52  | 18   | 100                                   | 10.000                                  |
| 8016330510                | PCT 200 x 3.6 Siyah / Black | 200 x 3.6                                       | 52  | 18   | 100                                   | 10.000                                  |
| 8016330609                | PCT 250 x 3.6 Beyaz / White | 250 x 3.6                                       | 68  | 18   | 100                                   | 8.000                                   |
| 8016330610                | PCT 250 x 3.6 Siyah / Black | 250 x 3.6                                       | 68  | 18   | 100                                   | 8.000                                   |
| 8016330709                | PCT 280 x 3.6 Beyaz / White | 280 x 3.6                                       | 82  | 18   | 100                                   | 8.000                                   |
| 8016330710                | PCT 280 x 3.6 Siyah / Black | 280 x 3.6                                       | 82  | 18   | 100                                   | 8.000                                   |
| 8016330809                | PCT 370 x 3.6 Beyaz / White | 370 x 3.6                                       | 105   | 18   | 100                                   | 6.000                                   |
| 8016330810                | PCT 370 x 3.6 Siyah / Black | 370 x 3.6                                       | 105   | 18   | 100                                   | 6.000                                   |
| 8016331009                | PCT 200 x 4.8 Beyaz / White | 200 x 4.8                                       | 49  | 22   | 100                                   | 7.000                                   |
| 8016331010                | PCT 200 x 4.8 Siyah / Black | 200 x 4.8                                       | 49  | 22   | 100                                   | 7.000                                   |
| 8016331209                | PCT 250 x 4.8 Beyaz / White | 250 x 4.8                                       | 68  | 22   | 100                                   | 6.000                                   |
| 8016331210                | PCT 250 x 4.8 Siyah / Black | 250 x 4.8                                       | 68  | 22   | 100                                   | 6.000                                   |
| 8016331309                | PCT 300 x 4.8 Beyaz / White | 300 x 4.8                                       | 83  | 22   | 100                                   | 5.000                                   |
| 8016331310                | PCT 300 x 4.8 Siyah / Black | 300 x 4.8                                       | 83  | 22   | 100                                   | 5.000                                   |
| 8016331509                | PCT 370 x 4.8 Beyaz / White | 370 x 4.8                                       | 105   | 22   | 100                                   | 4.000                                   |
| 8016331510                | PCT 370 x 4.8 Siyah / Black | 370 x 4.8                                       | 105   | 22   | 100                                   | 4.000                                   |
| 8016331709                | PCT 430 x 4.8 Beyaz / White | 430 x 4.8                                       | 125   | 22   | 100                                   | 3.000                                   |
| 8016331710                | PCT 430 x 4.8 Siyah / Black | 430 x 4.8                                       | 125   | 22   | 100                                   | 3.000                                   |
| 8016332009                | PCT 300 x 7.6 Beyaz / White | 300 x 7.6                                       | 80  | 55   | 100                                   | 3.000                                   |
| 8016332010                | PCT 300 x 7.6 Siyah / Black | 300 x 7.6                                       | 80  | 55   | 100                                   | 3.000                                   |
| 8016332209                | PCT 370 x 7.6 Beyaz / White | 370 x 7.6                                       | 101   | 55   | 100                                   | 2.500                                   |
| 8016332210                | PCT 370 x 7.6 Siyah / Black | 370 x 7.6                                       | 101   | 55   | 100                                   | 2.500                                   |
| 8016332309                | PCT 450 x 7.6 Beyaz / White | 450 x 7.6                                       | 128   | 55   | 100                                   | 2.500                                   |
| 8016332310                | PCT 450 x 7.6 Siyah / Black | 450 x 7.6                                       | 128   | 55   | 100                                   | 2.500                                   |
| 8016332329                | PCT 550 x 7.6 Beyaz / White | 550 x 7.6                                       | 155   | 55   | 100                                   | 1.500                                   |
| 8016332320                | PCT 550 x 7.6 Siyah / Black | 550 x 7.6                                       | 155   | 55   | 100                                   | 1.500                                   |
| 8016332339                | PCT 750 x 7.6 Beyaz / White | 750 x 7.6                                       | 220   | 55   | 100                                   | 1.200                                   |
| 8016332330                | PCT 750 x 7.6 Siyah / Black | 750 x 7.6                                       | 220   | 55   | 100                                   | 1.200                                   |
| 8016332409                | PCT 600 x 9.0 Beyaz / White | 600 x 9.0                                       | 160   | 80   | 100                                   | 1.200                                   |
| 8016332410                | PCT 600 x 9.0 Siyah / Black | 600 x 9.0                                       | 160   | 80   | 100                                   | 1.200                                   |
| 8016332609                | PCT 760 x 9.0 Beyaz / White | 760 x 9.0                                       | 227   | 80   | 100                                   | 1.200                                   |
| 8016332610                | PCT 760 x 9.0 Siyah / Black | 760 x 9.0                                       | 227   | 80   | 100                                   | 1.200                                   |
| 8016332709                | PCT 900 x 9.0 Beyaz / White | 900 x 9.0                                       | 275   | 80   | 100                                   | 1.200                                   |
| 8016332710                | PCT 900 x 9.0 Siyah / Black | 900 x 9.0                                       | 275   | 80   | 100                                   | 1.200                                   |

• Siyah renkli kablo bağları UV (Ultraviyole) ışınlarına karşı dayanıklıdır.

• Black colored cable ties are UV (Ultraviolet) resistant.

## Yapışkan Kroşeler

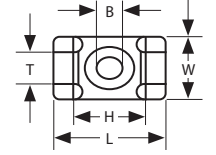
Self Adhesive Tie Mounts



| Ürün Kodu<br>Product Code | Ürün Adı<br>Product Name  | Ölçüler Dimensions (mm) |    |     | Amb. Mik.<br>Pack. Qty<br>(Adet/Pcs.) |
|---------------------------|---------------------------|-------------------------|----|-----|---------------------------------------|
|                           |                           | L                       | W  | T   |                                       |
| 8016333009                | ATM 19 x 19 Beyaz / White | 19                      | 19 | 3,6 | 100                                   |
| 8016333010                | ATM 19 x 19 Siyah / Black | 19                      | 19 | 3,6 | 100                                   |
| 8016333109                | ATM 28 x 28 Beyaz / White | 28                      | 28 | 4,8 | 100                                   |
| 8016333110                | ATM 28 x 28 Siyah / Black | 28                      | 28 | 4,8 | 100                                   |

## Vidalı Kroşeler

Screw Type Tie Mounts



| Ürün Kodu<br>Product Code | Ürün Adı<br>Product Name | Ölçüler Dimensions |      |      |     |    | Amb. Mik.<br>Pack. Qty<br>(Adet/Pcs.) |
|---------------------------|--------------------------|--------------------|------|------|-----|----|---------------------------------------|
|                           |                          | L                  | W    | H    | T   | B  |                                       |
| 8016334009                | STM 1 Beyaz / White      | 17,8               | 12,7 | 8,15 | 4,8 | M3 | 250                                   |
| 8016334019                | STM 2 Beyaz / White      | 25,4               | 16   | 10,8 | 9   | M5 | 250                                   |
| 8016334010                | STM 1 Siyah / Black      | 17,8               | 12,7 | 8,15 | 4,8 | M3 | 250                                   |
| 8016334020                | STM 2 Siyah / Black      | 25,4               | 16   | 10,8 | 9   | M5 | 250                                   |

## Kablo Bağı Sıkma ve Kesme Aleti

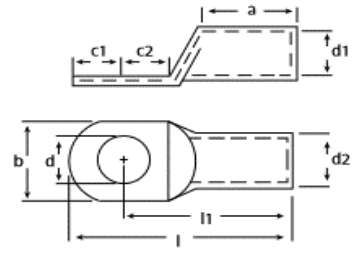
Cable Tie Tightening and Cutting Tool



| Ürün Kodu<br>Product Code | Ürün Adı<br>Product Name | Özellik<br>Function                   | Maks. Kablo Bağı Eni<br>Max. Cable Tie Width<br>(mm) | Amb. Mik.<br>Pack. Qty<br>(Adet/Pcs.) |
|---------------------------|--------------------------|---------------------------------------|--|---------------------------------------|
| 8016334200                | CTT1                     | Sıkma + Kesme<br>Tightening + Cutting | 4,8  | 1                                     |

## Sıkmalı Kablo Pabuçları - Standart Seri

### Standart Range Compression Cable Lugs - Standard Line



| Ürün Kodu<br>Product Code | Ürün Adı<br>Product Name         | Kesit<br>Cross Sec.<br>(mm <sup>2</sup> ) | Ölçüler / Dimensions (mm) |             |             |             |             |           |             |             |             | Delik Çapı<br>Hole Dia. | Amb. Mik.<br>Pack. Qty.<br>(Adet/Pcs.) |
|---------------------------|----------------------------------|---|---------------------------|-------------|-------------|-------------|-------------|-----------|-------------|-------------|-------------|-------------------------|--|
|                           |                                  |   | d                         | d1          | d2          | l           | l1          | a         | b           | c1          | c2          |                         |  |
| <b>8029320610</b>         | <b>CCL 10mm<sup>2</sup> M6</b>   | <b>10</b>                                 | <b>6,5</b>                | <b>4,4</b>  | <b>6</b>    | <b>27,5</b> | <b>21,7</b> | <b>10</b> | <b>10,4</b> | <b>6</b>    | <b>6</b>    | <b>M6</b>               | <b>500</b>                             |
| <b>8029320620</b>         | <b>CCL 10mm<sup>2</sup> M8</b>   | <b>10</b>                                 | <b>8,5</b>                | <b>4,4</b>  | <b>6</b>    | <b>27,5</b> | <b>21,7</b> | <b>10</b> | <b>13,7</b> | <b>6</b>    | <b>6</b>    | <b>M8</b>               | <b>500</b>                             |
| <b>8029320630</b>         | <b>CCL 16mm<sup>2</sup> M6</b>   | <b>16</b>                                 | <b>6,5</b>                | <b>5,5</b>  | <b>8</b>    | <b>32,6</b> | <b>24,9</b> | <b>12</b> | <b>11,4</b> | <b>7</b>    | <b>8</b>    | <b>M6</b>               | <b>300</b>                             |
| <b>8029320640</b>         | <b>CCL 16mm<sup>2</sup> M8</b>   | <b>16</b>                                 | <b>8,5</b>                | <b>5,5</b>  | <b>8</b>    | <b>32,6</b> | <b>24,9</b> | <b>12</b> | <b>13,9</b> | <b>7</b>    | <b>8</b>    | <b>M8</b>               | <b>300</b>                             |
| 8029320641                | CCL 16mm <sup>2</sup> M10        | 16  | 10,5                      | 5,5         | 8           | 32,6        | 24,9        | 12        | 16,1        | 7           | 8           | M10                     | 300                                    |
| 8029320649                | CCL 25mm <sup>2</sup> M6         | 25  | 6,5                       | 7           | 9           | 39          | 32,3        | 16        | 13,6        | 6,8         | 9,2         | M6                      | 200                                    |
| <b>8029320650</b>         | <b>CCL 25mm<sup>2</sup> M8</b>   | <b>25</b>                                 | <b>8,5</b>                | <b>7</b>    | <b>9</b>    | <b>39</b>   | <b>32,3</b> | <b>16</b> | <b>13,7</b> | <b>6,8</b>  | <b>9,2</b>  | <b>M8</b>               | <b>200</b>                             |
| 8029320651                | CCL 25mm <sup>2</sup> M10        | 25  | 10,5                      | 7           | 9,5         | 42          | 34,1        | 16        | 16,1        | 6,8         | 11          | M10                     | 200                                    |
| 8029320659                | CCL 35mm <sup>2</sup> M6         | 35  | 6,5                       | 8,5         | 11          | 44          | 35,6        | 19        | 15,9        | 8,3         | 9,7         | M6                      | 150                                    |
| <b>8029320660</b>         | <b>CCL 35mm<sup>2</sup> M8</b>   | <b>35</b>                                 | <b>8,5</b>                | <b>8,5</b>  | <b>11</b>   | <b>44</b>   | <b>35,6</b> | <b>19</b> | <b>15,9</b> | <b>8,3</b>  | <b>9,7</b>  | <b>M8</b>               | <b>150</b>                             |
| 8029320661                | CCL 35mm <sup>2</sup> M10        | 35  | 10,5                      | 8,5         | 11          | 48          | 37,9        | 19        | 15,8        | 10          | 12          | M10                     | 150                                    |
| 8029320669                | CCL 50mm <sup>2</sup> M8         | 50  | 8,5                       | 10          | 12          | 47,5        | 39,3        | 21        | 17,8        | 8,3         | 9,7         | M8                      | 100                                    |
| <b>8029320670</b>         | <b>CCL 50mm<sup>2</sup> M10</b>  | <b>50</b>                                 | <b>10,5</b>               | <b>10</b>   | <b>12</b>   | <b>51,5</b> | <b>41,6</b> | <b>21</b> | <b>17,9</b> | <b>10</b>   | <b>12</b>   | <b>M10</b>              | <b>100</b>                             |
| 8029320671                | CCL 50mm <sup>2</sup> M12        | 50  | 13                        | 10          | 13          | 51,5        | 41,6        | 21        | 19,2        | 10          | 12          | M12                     | 100                                    |
| 8029320672                | CCL 50mm <sup>2</sup> M14        | 50  | 15                        | 10          | 13          | 56,5        | 44,6        | 21        | 20,7        | 12          | 15          | M14                     | 100                                    |
| 8029320679                | CCL 70mm <sup>2</sup> M8         | 70  | 8,5                       | 11,5        | 14,5        | 54,6        | 44,5        | 23        | 21,2        | 10          | 12          | M8                      | 75                                     |
| <b>8029320680</b>         | <b>CCL 70mm<sup>2</sup> M10</b>  | <b>70</b>                                 | <b>10,5</b>               | <b>11,5</b> | <b>14,5</b> | <b>54,6</b> | <b>44,5</b> | <b>23</b> | <b>21,2</b> | <b>10</b>   | <b>12</b>   | <b>M10</b>              | <b>75</b>                              |
| 8029320681                | CCL 70mm <sup>2</sup> M12        | 70  | 13                        | 11,5        | 14,5        | 54,6        | 44,5        | 23        | 21,3        | 10          | 12          | M12                     | 75                                     |
| 8029320682                | CCL 70mm <sup>2</sup> M14        | 70  | 15                        | 11,5        | 14,5        | 62,6        | 47,5        | 23        | 21,5        | 15          | 15          | M14                     | 75                                     |
| 8029320689                | CCL 95mm <sup>2</sup> M8         | 95  | 8,5                       | 13,5        | 17          | 58,8        | 48,9        | 26        | 24,7        | 10          | 12          | M8                      | 50                                     |
| <b>8029320690</b>         | <b>CCL 95mm<sup>2</sup> M10</b>  | <b>95</b>                                 | <b>10,5</b>               | <b>13,5</b> | <b>17</b>   | <b>58,8</b> | <b>48,9</b> | <b>26</b> | <b>24,7</b> | <b>10</b>   | <b>12</b>   | <b>M10</b>              | <b>50</b>                              |
| <b>8029320700</b>         | <b>CCL 95mm<sup>2</sup> M12</b>  | <b>95</b>                                 | <b>13</b>                 | <b>13,5</b> | <b>17</b>   | <b>58,8</b> | <b>48,9</b> | <b>26</b> | <b>24,6</b> | <b>10</b>   | <b>12</b>   | <b>M12</b>              | <b>50</b>                              |
| 8029320709                | CCL 120mm <sup>2</sup> M10       | 120                                       | 10,5                      | 15,5        | 19          | 69          | 55,9        | 29        | 28,1        | 13          | 14,5        | M10                     | 40                                     |
| <b>8029320710</b>         | <b>CCL 120mm<sup>2</sup> M12</b> | <b>120</b>                                | <b>13</b>                 | <b>15,5</b> | <b>19</b>   | <b>69</b>   | <b>55,9</b> | <b>29</b> | <b>28,2</b> | <b>13</b>   | <b>14,5</b> | <b>M12</b>              | <b>40</b>                              |
| 8029320711                | CCL 120mm <sup>2</sup> M16       | 120                                       | 17                        | 15,5        | 19          | 69          | 55,9        | 29        | 28,2        | 13          | 14,5        | M16                     | 40                                     |
| 8029320719                | CCL 150mm <sup>2</sup> M10       | 150                                       | 10,5                      | 16,5        | 16,5        | 76,5        | 59,9        | 30        | 30,2        | 16,5        | 16,5        | M10                     | 30                                     |
| <b>8029320720</b>         | <b>CCL 150mm<sup>2</sup> M12</b> | <b>150</b>                                | <b>13</b>                 | <b>16,5</b> | <b>21</b>   | <b>76,5</b> | <b>59,9</b> | <b>30</b> | <b>30,1</b> | <b>16,5</b> | <b>16,5</b> | <b>M12</b>              | <b>30</b>                              |
| 8029320721                | CCL 150mm <sup>2</sup> M16       | 150                                       | 17                        | 16,5        | 21          | 76,5        | 59,9        | 30        | 30,1        | 16,5        | 16,5        | M16                     | 30                                     |
| 8029320729                | CCL 185mm <sup>2</sup> M12       | 185                                       | 13                        | 18,5        | 23          | 82,5        | 65,6        | 33        | 34,2        | 17          | 18          | M12                     | 25                                     |
| <b>8029320730</b>         | <b>CCL 185mm<sup>2</sup> M16</b> | <b>185</b>                                | <b>17</b>                 | <b>18,5</b> | <b>23</b>   | <b>82,5</b> | <b>65,6</b> | <b>33</b> | <b>34,1</b> | <b>17</b>   | <b>18</b>   | <b>M16</b>              | <b>25</b>                              |
| 8029320739                | CCL 240mm <sup>2</sup> M12       | 240                                       | 13                        | 21          | 26          | 89          | 72,1        | 38        | 38,2        | 17          | 18          | M12                     | 20                                     |
| <b>8029320740</b>         | <b>CCL 240mm<sup>2</sup> M16</b> | <b>240</b>                                | <b>17</b>                 | <b>21</b>   | <b>26</b>   | <b>89</b>   | <b>72,1</b> | <b>38</b> | <b>38,2</b> | <b>17</b>   | <b>18</b>   | <b>M16</b>              | <b>20</b>                              |

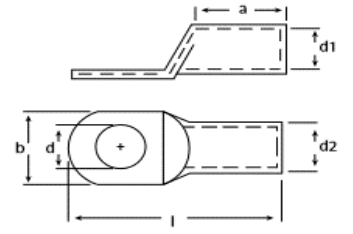


**Malzeme** : EN 13600 Standardında elektrolitik bakır  
**Kaplama** : Minimum 3 mikron (µm) Kalay Kaplama

Material : EN 13600 Standarts Electrolytically Tin (E-Cu) Plated Copper  
 Plating : Minimum 3 microns (µm) Tin Plated

**\*\* Koyu renk ile işaretlenmiş kablo pabuçları standart ürünlerimiz olup, diğer kalemler için lütfen stok durumunu sorunuz.**

**\*\* Bold fonted items are our standart sizes, pls ask stock availability for other items.**



## Standart Kablo Pabuçları - Eko Seri

### Compression Cable Lugs - Eco Line

| Ürün Kodu<br>Product Code | Ürün Adı<br>Product Name | Kesit<br>Cross Sec.<br>(mm <sup>2</sup> ) | Ölçüler / Dimensions (mm) |      |      |      |    |      | Delik Çapı<br>Hole Dia. | Amb. Mik.<br>Pack. Qty.<br>(Adet/Pcs.) |
|---------------------------|--------------------------|---|---------------------------|------|------|------|----|------|-------------------------|--|
|                           |                          |   | d                         | d1   | d2   | l    | a  | b    |                         |  |
| 8029320500                | <b>CCL-E 16 M6</b>       | 16  | 6,5                       | 5,5  | 7    | 32,5 | 11 | 10,5 | M6                      | 500                                    |
| 8029320510                | <b>CCL-E 16 M8</b>       | 16  | 8,5                       | 5,5  | 7    | 32,5 | 11 | 13   | M8                      | 500                                    |
| 8029320520                | <b>CCL-E 25 M8</b>       | 25  | 8,5                       | 7    | 9    | 38,5 | 16 | 13   | M8                      | 300                                    |
| 8029320530                | <b>CCL-E 35 M8</b>       | 35  | 8,5                       | 8,5  | 10,5 | 43,5 | 19 | 15,5 | M8                      | 200                                    |
| 8029320540                | <b>CCL-E 50 M10</b>      | 50  | 10,5                      | 10   | 12   | 51,5 | 21 | 17,6 | M10                     | 125                                    |
| 8029320550                | <b>CCL-E 70 M10</b>      | 70  | 10,5                      | 11,5 | 14   | 55,5 | 23 | 20,7 | M10                     | 100                                    |
| 8029320560                | <b>CCL-E 95 M12</b>      | 95  | 13                        | 13,5 | 16   | 58,5 | 26 | 23,5 | M12                     | 75                                     |
| 8029320570                | <b>CCL-E 120 M12</b>     | 120                                       | 13                        | 15,5 | 18   | 71   | 29 | 26,7 | M12                     | 50                                     |
| 8029320580                | <b>CCL-E 150 M12</b>     | 150                                       | 13                        | 16,5 | 20   | 76   | 30 | 29,2 | M12                     | 30                                     |
| 8029320590                | <b>CCL-E 185 M16</b>     | 185                                       | 17                        | 18,5 | 22   | 82   | 33 | 32,3 | M16                     | 25                                     |
| 8029320600                | <b>CCL-E 240 M16</b>     | 240                                       | 17                        | 21,5 | 25,5 | 91   | 38 | 37,6 | M16                     | 20                                     |

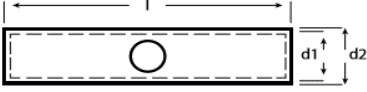
**Malzeme** : EN 13600 Standardında elektrolitik bakır  
**Kaplama** : Minimum 3 mikron (µm) Kalay Kaplama

**Material** : EN 13600 Standarts Electrolytically Tin (E-Cu) Plated Copper  
**Plating** : Minimum 3 microns (µm) Tin Plated



## Standart Seri Ek Muflar

### Standard Range Compression Butt Terminals



| Ürün Kodu<br>Product Code | Ürün Adı<br>Product Name | Kesit<br>Cross Sec.<br>(mm <sup>2</sup> ) | Ölçüler / Dimensions (mm) |      |      | Amb. Mik.<br>Pack. Qty.<br>(Adet/Pcs.) |
|---------------------------|--------------------------|---|---------------------------|------|------|--|
|                           |                          |   | d1                        | d2   | l    |  |
| 8029320845                | <b>CBT 10</b>            | 10  | 4,4                       | 6    | 27   | 400                                    |
| 8029320850                | <b>CBT 16</b>            | 16  | 5,5                       | 8    | 32   | 250                                    |
| 8029320860                | <b>CBT 25</b>            | 25  | 7                         | 9    | 40,5 | 200                                    |
| 8029320870                | <b>CBT 35</b>            | 35  | 8,2                       | 11   | 45,5 | 150                                    |
| 8029320880                | <b>CBT 50</b>            | 50  | 9,5                       | 13   | 53,5 | 80                                     |
| 8029320890                | <b>CBT 70</b>            | 70  | 11,2                      | 14,5 | 57,5 | 60                                     |
| 8029320900                | <b>CBT 95</b>            | 95  | 13,4                      | 17   | 61,5 | 40                                     |
| 8029320910                | <b>CBT 120</b>           | 120                                       | 15                        | 19,5 | 74   | 30                                     |
| 8029320920                | <b>CBT 150</b>           | 150                                       | 16,5                      | 21   | 79   | 25                                     |
| 8029320930                | <b>CBT 185</b>           | 185                                       | 19                        | 24   | 85   | 18                                     |
| 8029320940                | <b>CBT 240</b>           | 240                                       | 21                        | 26   | 95   | 13                                     |

**Malzeme** : EN 13600 Standardında elektrolitik bakır

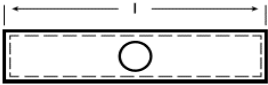
**Kaplama** : Minimum 3 mikron (µm) Kalay Kaplama

Material : EN 13600 Standarts Electrolytically Tin (E-Cu) Plated Copper

Plating : Minimum 3 microns (µm) Tin Plated

## Eko Seri Ek Muflar

### Economical Range Compression Butt Terminals



| Ürün Kodu<br>Product Code | Ürün Adı<br>Product Name | Kesit<br>Cross Sec.<br>(mm <sup>2</sup> ) | Uzunluk<br>Lenght<br>(l) mm | Amb. Mik.<br>Pack. Qty.<br>(Adet/Pcs.) |
|---------------------------|--------------------------|---|-----------------------------|--|
| 8029320750                | <b>CBT-E 16</b>          | 16  | 32                          | 300                                    |
| 8029320760                | <b>CBT-E 25</b>          | 25  | 41                          | 200                                    |
| 8029320770                | <b>CBT-E 35</b>          | 35  | 46                          | 150                                    |
| 8029320780                | <b>CBT-E 50</b>          | 50  | 54                          | 125                                    |
| 8029320790                | <b>CBT-E 70</b>          | 70  | 58                          | 100                                    |
| 8029320800                | <b>CBT-E 95</b>          | 95  | 62                          | 60                                     |
| 8029320810                | <b>CBT-E 120</b>         | 120                                       | 74                          | 40                                     |
| 8029320820                | <b>CBT-E 150</b>         | 150                                       | 80                          | 30                                     |
| 8029320830                | <b>CBT-E 185</b>         | 185                                       | 86                          | 22                                     |
| 8029320840                | <b>CBT-E 240</b>         | 240                                       | 95                          | 15                                     |

**Malzeme** : EN 13600 Standardında elektrolitik bakır

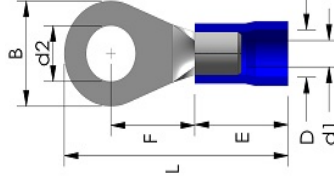
**Kaplama** : Minimum 3 mikron (µm) Kalay Kaplama

Material : EN 13600 Standarts Electrolytically Tin (E-Cu) Plated Copper

Plating : Minimum 3 microns (µm) Tin Plated

## Yuvarlak Pabuçlar

Insulated Ring Terminals



| Ürün Kodu<br>Product Code | Ürün Adı<br>Product Name | Kesit<br>Cross Sect.<br>(mm <sup>2</sup> ) | Ölçüler Dimensions (mm) |      |      |      |      |     |     | Renk<br>Color        | Amb. Mik.<br>Pack. Qty<br>(Adet/Pcs.) |
|---------------------------|--------------------------|--|-------------------------|------|------|------|------|-----|-----|----------------------|---------------------------------------|
|                           |                          |  | d2                      | B    | F    | L    | E    | D   | d1  |                      |                                       |
| 8018335500                | <b>IRT 301</b>           | 0,5 - 1,5                                  | 3,2                     | 5,5  | 4    | 16,7 | 10   | 4,1 | 1,7 | <b>Kırmızı / Red</b> | 200                                   |
| 8018335510                | <b>IRT 351</b>           | 0,5 - 1,5                                  | 3,7                     | 5,5  | 4    | 16,7 | 10   | 4,1 | 1,7 | <b>Kırmızı / Red</b> | 200                                   |
| 8018335520                | <b>IRT 401</b>           | 0,5 - 1,5                                  | 4,3                     | 6,6  | 6,3  | 19,6 | 10   | 4,1 | 1,7 | <b>Kırmızı / Red</b> | 200                                   |
| 8018335530                | <b>IRT 501</b>           | 0,5 - 1,5                                  | 5,3                     | 8    | 7    | 21   | 10   | 4,1 | 1,7 | <b>Kırmızı / Red</b> | 200                                   |
| 8018335540                | <b>IRT 601</b>           | 0,5 - 1,5                                  | 6,5                     | 11,6 | 11,1 | 26,8 | 10   | 4,1 | 1,7 | <b>Kırmızı / Red</b> | 200                                   |
| 8018335550                | <b>IRT 801</b>           | 0,5 - 1,5                                  | 8,4                     | 11,6 | 11,1 | 26,8 | 10   | 4,1 | 1,7 | <b>Kırmızı / Red</b> | 200                                   |
| 8018335560                | <b>IRT 302</b>           | 1,5 - 2,5                                  | 3,2                     | 6,4  | 4,3  | 17,5 | 10   | 4,5 | 2,3 | <b>Mavi / Blue</b>   | 200                                   |
| 8018335570                | <b>IRT 402</b>           | 1,5 - 2,5                                  | 4,3                     | 6,6  | 6,3  | 19,5 | 10   | 4,5 | 2,3 | <b>Mavi / Blue</b>   | 200                                   |
| 8018335580                | <b>IRT 502</b>           | 1,5 - 2,5                                  | 5,3                     | 8,5  | 7,8  | 22   | 10   | 4,5 | 2,3 | <b>Mavi / Blue</b>   | 200                                   |
| 8018335590                | <b>IRT 602</b>           | 1,5 - 2,5                                  | 6,5                     | 12   | 11   | 27   | 10   | 4,5 | 2,3 | <b>Mavi / Blue</b>   | 200                                   |
| 8018335600                | <b>IRT 802</b>           | 1,5 - 2,5                                  | 8,4                     | 12   | 11   | 27   | 10   | 4,5 | 2,3 | <b>Mavi / Blue</b>   | 200                                   |
| 8018335610                | <b>IRT 1002</b>          | 1,5 - 2,5                                  | 10,5                    | 13,6 | 13,9 | 30,7 | 10   | 4,5 | 2,3 | <b>Mavi / Blue</b>   | 100                                   |
| 8018335620                | <b>IRT 406</b>           | 4,0 - 6,0                                  | 4,3                     | 7,2  | 5,9  | 22   | 12,5 | 6,5 | 3,4 | <b>Sarı / Yellow</b> | 75                                    |
| 8018335630                | <b>IRT 506</b>           | 4,0 - 6,0                                  | 5,3                     | 9,5  | 8,3  | 25,5 | 12,5 | 6,5 | 3,4 | <b>Sarı / Yellow</b> | 75                                    |
| 8018335640                | <b>IRT 606</b>           | 4,0 - 6,0                                  | 6,5                     | 12   | 10,5 | 29   | 12,5 | 6,5 | 3,4 | <b>Sarı / Yellow</b> | 75                                    |
| 8018335650                | <b>IRT 806</b>           | 4,0 - 6,0                                  | 8,4                     | 15   | 13,7 | 33,7 | 12,5 | 6,5 | 3,4 | <b>Sarı / Yellow</b> | 75                                    |
| 8018335660                | <b>IRT 1006</b>          | 4,0 - 6,0                                  | 10,5                    | 15   | 13,7 | 33,7 | 12,5 | 6,5 | 3,4 | <b>Sarı / Yellow</b> | 75                                    |
| 8018335670                | <b>IRT 1206</b>          | 4,0 - 6,0                                  | 13                      | 19,2 | 16   | 38,1 | 12,5 | 6,5 | 3,4 | <b>Sarı / Yellow</b> | 75                                    |
| 8018335680                | <b>IRT 510</b>           | 8,0 - 10,0                                 | 5,3                     | 12   | 9,7  | 32,5 | 17   | 8   | 4,5 | <b>Kırmızı / Red</b> | 50                                    |
| 8018335690                | <b>IRT 610</b>           | 8,0 - 10,0                                 | 6,7                     | 12   | 9,7  | 32,5 | 17   | 8   | 4,5 | <b>Kırmızı / Red</b> | 50                                    |

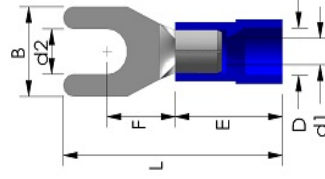
\* Malzeme: Bakır, Nikel Kaplı

\* Material: Copper, Nickel Plated - PVC



## Çatal Pabuçlar

Insulated Fork Terminals



EAC

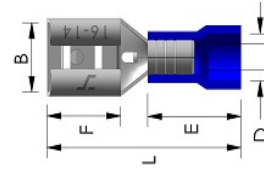
| Ürün Kodu<br>Product Code | Ürün Adı<br>Product Name | Kesit<br>Cross Sect.<br>(mm <sup>2</sup> ) | Ölçüler Dimensions (mm) |      |      |      |      |     |     | Renk<br>Color        | Amb. Mik.<br>Pack. Qty<br>(Adet/Pcs.) |
|---------------------------|--------------------------|--|-------------------------|------|------|------|------|-----|-----|----------------------|---------------------------------------|
|                           |                          |  | d2                      | B    | F    | L    | E    | D   | d1  |                      |                                       |
| 8018335700                | <b>IFT 301</b>           | 0,5 - 1,5                                  | 3,2                     | 5,8  | 6,3  | 21   | 10   | 4,1 | 1,7 | <b>Kırmızı / Red</b> | 200                                   |
| 8018335720                | <b>IFT 401</b>           | 0,5 - 1,5                                  | 4,3                     | 6,4  | 6,3  | 20,6 | 10   | 4,1 | 1,7 | <b>Kırmızı / Red</b> | 200                                   |
| 8018335730                | <b>IFT 501</b>           | 0,5 - 1,5                                  | 5,3                     | 8    | 7    | 21   | 10   | 4,1 | 1,7 | <b>Kırmızı / Red</b> | 200                                   |
| 8018335740                | <b>IFT 601</b>           | 0,5 - 1,5                                  | 6,5                     | 12   | 11   | 27,2 | 10   | 4,1 | 1,7 | <b>Kırmızı / Red</b> | 200                                   |
| 8018335750                | <b>IFT 302</b>           | 1,5 - 2,5                                  | 3,2                     | 5,8  | 6,3  | 21   | 10   | 4,2 | 2,3 | <b>Mavi / Blue</b>   | 200                                   |
| 8018335760                | <b>IFT 402</b>           | 1,5 - 2,5                                  | 4,3                     | 6,4  | 6,3  | 21   | 10   | 4,2 | 2,3 | <b>Mavi / Blue</b>   | 200                                   |
| 8018335770                | <b>IFT 502</b>           | 1,5 - 2,5                                  | 5,3                     | 9,5  | 7,2  | 22   | 10   | 4,2 | 2,3 | <b>Mavi / Blue</b>   | 200                                   |
| 8018335780                | <b>IFT 602</b>           | 1,5 - 2,5                                  | 6,5                     | 12   | 11   | 27,2 | 10   | 4,2 | 2,3 | <b>Mavi / Blue</b>   | 200                                   |
| 8018335790                | <b>IFT 406</b>           | 4,0 - 6,0                                  | 4,3                     | 8,5  | 7,5  | 25,2 | 12,5 | 6,5 | 3,4 | <b>Sarı / Yellow</b> | 75                                    |
| 8018335800                | <b>IFT 506</b>           | 4,0 - 6,0                                  | 5,3                     | 9,5  | 7,5  | 25,2 | 12,5 | 6,5 | 3,4 | <b>Sarı / Yellow</b> | 75                                    |
| 8018335810                | <b>IFT 606</b>           | 4,0 - 6,0                                  | 6,5                     | 9,5  | 7,5  | 25,2 | 12,5 | 6,5 | 3,4 | <b>Sarı / Yellow</b> | 75                                    |
| 8018335820                | <b>IFT 806</b>           | 4,0 - 6,0                                  | 8,4                     | 13,5 | 10,5 | 30   | 12,5 | 6,5 | 3,4 | <b>Sarı / Yellow</b> | 75                                    |

\* Malzeme: Bakır, Nikel Kaplı

\* Material: Copper, Nickel Plated - PVC

## Faston Dişi Pabuçlar

Fast-on Female Terminals



EAC

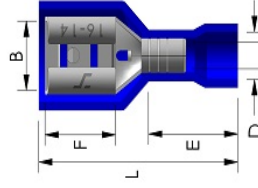
| Ürün Kodu<br>Product Code | Ürün Adı<br>Product Name | Kesit<br>Cross Sect.<br>(mm <sup>2</sup> ) | Ölçüler Dimensions (mm) |     |      |      |     | Renk<br>Color        | Amb. Mik.<br>Pack. Qty<br>(Adet/Pcs.) |
|---------------------------|--------------------------|--|-------------------------|-----|------|------|-----|----------------------|---------------------------------------|
|                           |                          |  | B                       | F   | L    | E    | D   |                      |                                       |
| 8018336030                | <b>FFT 1288</b>          | 0,5 - 1,5                                  | 3,20                    | 6,5 | 19,0 | 10,5 | 3,8 | <b>Kırmızı / Red</b> | 200                                   |
| 8018336100                | <b>FFT 1488</b>          | 0,5 - 1,5                                  | 5,00                    | 6,4 | 19,4 | 10,5 | 3,8 | <b>Kırmızı / Red</b> | 200                                   |
| 8018336110                | <b>FFT 1638</b>          | 0,5 - 1,5                                  | 6,60                    | 7,5 | 20,8 | 10,5 | 3,8 | <b>Kırmızı / Red</b> | 200                                   |
| 8018336115                | <b>FFT 2288</b>          | 1,5 - 2,5                                  | 5,00                    | 6,4 | 19,4 | 10,5 | 4,7 | <b>Mavi / Blue</b>   | 150                                   |
| 8018336120                | <b>FFT 2488</b>          | 1,5 - 2,5                                  | 6,60                    | 7,5 | 20,8 | 10,5 | 4,7 | <b>Mavi / Blue</b>   | 150                                   |
| 8018336130                | <b>FFT 2638</b>          | 1,5 - 2,5                                  | 6,60                    | 7,5 | 23,3 | 13,0 | 6,2 | <b>Mavi / Blue</b>   | 150                                   |
| 8018336140                | <b>FFT 5638</b>          | 4,0 - 6,0                                  | 6,6                     | 7,2 | 23,3 | 13   | 5,6 | <b>Sarı / Yellow</b> | 100                                   |

\* Malzeme: Pirinç, Kalay Kaplı

\* Material: Brass, Tin Plated - PVC

## İzoleli Faston Dişi Pabuçlar

Insulated Fast-on Female Terminals

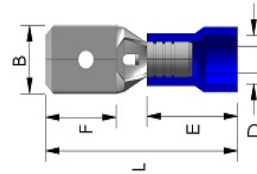


| Ürün Kodu<br>Product Code | Ürün Adı<br>Product Name | Kesit<br>Cross Sect.<br>(mm <sup>2</sup> ) | Ölçüler Dimensions (mm) |     |       |       |     | Renk<br>Color        | Amb. Mik.<br>Pack. Qty<br>(Adet/Pcs.) |
|---------------------------|--------------------------|--|-------------------------|-----|-------|-------|-----|----------------------|---------------------------------------|
|                           |                          |  | B                       | F   | L     | E     | D   |                      |                                       |
| 8018336300                | <b>IFFT 1288</b>         | 0,5 - 1,5                                  | 3,2                     | 6,5 | 19,00 | 10,50 | 3,8 | <b>Kırmızı / Red</b> | 200                                   |
| 8018336310                | <b>IFFT 1488</b>         | 0,5 - 1,5                                  | 5                       | 6,4 | 20,50 | 10,50 | 3,8 | <b>Kırmızı / Red</b> | 200                                   |
| 8018336320                | <b>IFFT 1638</b>         | 0,5 - 1,5                                  | 6,6                     | 7,5 | 21,80 | 10,50 | 3,8 | <b>Kırmızı / Red</b> | 100                                   |
| 8018336325                | <b>IFFT 2288</b>         | 1,5 - 2,5                                  | 3,2                     | 6,4 | 20,0  | 10    | 4,2 | <b>Mavi / Blue</b>   | 100                                   |
| 8018336330                | <b>IFFT 2488</b>         | 1,5 - 2,5                                  | 5                       | 6,4 | 19,2  | 10    | 4,2 | <b>Mavi / Blue</b>   | 100                                   |
| 8018336340                | <b>IFFT 2638</b>         | 1,5 - 2,5                                  | 6,6                     | 7,5 | 24,20 | 12,50 | 6,2 | <b>Mavi / Blue</b>   | 100                                   |
| 8018336350                | <b>IFFT 5638</b>         | 4,0 - 6,0                                  | 6,6                     | 7,2 | 23,8  | 13    | 5,6 | <b>Sarı / Yellow</b> | 75                                    |

\* Malzeme: Pirinç, Kalay Kaplı  
\* Material: Brass, Tin Plated - PVC

## Faston Erkek Pabuçlar

Fast-on Male Terminals



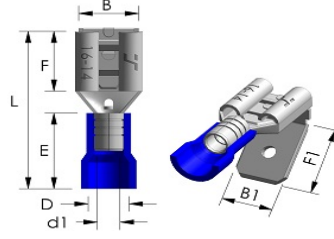
| Ürün Kodu<br>Product Code | Ürün Adı<br>Product Name | Kesit<br>Cross Sect.<br>(mm <sup>2</sup> ) | Ölçüler Dimensions (mm) |     |      |      |     | Renk<br>Color        | Amb. Mik.<br>Pack. Qty<br>(Adet/Pcs.) |
|---------------------------|--------------------------|--|-------------------------|-----|------|------|-----|----------------------|---------------------------------------|
|                           |                          |  | B                       | F   | L    | E    | D   |                      |                                       |
| 8018336150                | <b>FMT 1288</b>          | 0,5 - 1,5                                  | 2,80                    | 6,5 | 19,2 | 10,5 | 3,8 | <b>Kırmızı / Red</b> | 200                                   |
| 8018336160                | <b>FMT 1488</b>          | 0,5 - 1,5                                  | 4,80                    | 6,7 | 19,8 | 10,5 | 3,8 | <b>Kırmızı / Red</b> | 200                                   |
| 8018336170                | <b>FMT 1638</b>          | 0,5 - 1,5                                  | 6,35                    | 7,7 | 21,8 | 10,5 | 3,8 | <b>Kırmızı / Red</b> | 200                                   |
| 8018336175                | <b>FMT 2288</b>          | 1,5 - 2,5                                  | 4,80                    | 6,7 | 19,8 | 10,5 | 4,7 | <b>Mavi / Blue</b>   | 200                                   |
| 8018336180                | <b>FMT 2488</b>          | 1,5 - 2,5                                  | 6,35                    | 7,7 | 21,8 | 10,5 | 4,7 | <b>Mavi / Blue</b>   | 200                                   |
| 8018336190                | <b>FMT 2638</b>          | 1,5 - 2,5                                  | 6,35                    | 7,7 | 24,8 | 13,0 | 6,2 | <b>Mavi / Blue</b>   | 200                                   |
| 8018336200                | <b>FMT 5638</b>          | 4,0 - 6,0                                  | 6,3                     | 7,7 | 24   | 13   | 5,6 | <b>Sarı / Yellow</b> | 100                                   |

\* Malzeme: Pirinç, Kalay Kaplı  
\* Material: Brass, Tin Plated - PVC



## Geri Dönüflü Pabuçlar

Piggy Back Terminals

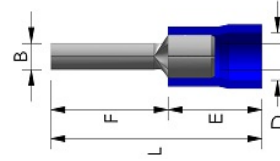


| Ürün Kodu<br>Product Code | Ürün Adı<br>Product Name | Kesit<br>Cross Sect.<br>(mm <sup>2</sup> ) | Ölçüler Dimensions (mm) |     |   |     |    |    |     |     | Renk<br>Color        | Amb. Mik.<br>Pack. Qty<br>(Adet/Pcs.) |
|---------------------------|--------------------------|--|-------------------------|-----|---|-----|----|----|-----|-----|----------------------|---------------------------------------|
|                           |                          |  | B                       | B1  | F | F1  | L  | E  | D   | d1  |                      |                                       |
| 8018336460                | <b>PBT 1638</b>          | 0,5 - 1,5                                  | 6,6                     | 6,3 | 8 | 8,2 | 22 | 10 | 3,5 | 1,7 | <b>Kırmızı / Red</b> | 100                                   |
| 8018336470                | <b>PBT 2638</b>          | 1,5 - 2,5                                  | 6,6                     | 6,3 | 8 | 8,2 | 22 | 10 | 4,2 | 2,3 | <b>Mavi / Blue</b>   | 100                                   |
| 8018336480                | <b>PBT 5638</b>          | 4,0 - 6,0                                  | 6,6                     | 6,3 | 8 | 8,2 | 25 | 13 | 5,6 | 3,4 | <b>Sarı / Yellow</b> | 75                                    |

\* Malzeme: Bakır, Kalay Kaplı  
\* Material: Copper, Tin Plated - PVC

## İğne Tip Pabuçlar

Insulated Pin Terminals

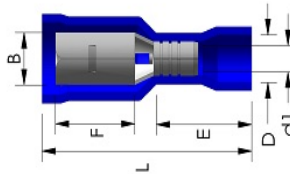


| Ürün Kodu<br>Product Code | Ürün Adı<br>Product Name | Kesit<br>Cross Sect.<br>(mm <sup>2</sup> ) | Ölçüler Dimensions (mm) |    |    |    |     | Renk<br>Color        | Amb. Mik.<br>Pack. Qty<br>(Adet/Pcs.) |
|---------------------------|--------------------------|--|-------------------------|----|----|----|-----|----------------------|---------------------------------------|
|                           |                          |  | B                       | F  | L  | E  | D   |                      |                                       |
| 8018335900                | <b>IPT 1/1,5</b>         | 0,5 - 1,5                                  | 1,9                     | 10 | 20 | 10 | 4,0 | <b>Kırmızı / Red</b> | 200                                   |
| 8018335910                | <b>IPT 1/2,5</b>         | 1,5 - 2,5                                  | 1,9                     | 12 | 22 | 10 | 4,5 | <b>Mavi / Blue</b>   | 200                                   |
| 8018335920                | <b>IPT 1/6</b>           | 4,0 - 6,0                                  | 2,8                     | 14 | 27 | 13 | 6,4 | <b>Sarı / Yellow</b> | 100                                   |

\* Malzeme: Bakır, Kalay Kaplı  
\* Material: Copper, Tin Plated - PVC

## Dişi Pabuçlar

Bullet Female Terminals

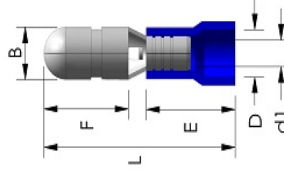


| Ürün Kodu<br>Product Code | Ürün Adı<br>Product Name | Kesit<br>Cross Sect.<br>(mm <sup>2</sup> ) | Ölçüler Dimensions (mm) |     |      |    |     |     | Renk<br>Color        | Amb. Mik.<br>Pack. Qty<br>(Adet/Pcs.) |
|---------------------------|--------------------------|--|-------------------------|-----|------|----|-----|-----|----------------------|---------------------------------------|
|                           |                          |  | B                       | F   | L    | E  | D   | d1  |                      |                                       |
| 8018336600                | <b>BFT 1040</b>          | 0,5 - 1,5                                  | 3,9                     | 7,3 | 23,5 | 10 | 3,5 | 1,7 | <b>Kırmızı / Red</b> | 100                                   |
| 8018336610                | <b>BFT 2050</b>          | 1,5 - 2,5                                  | 4,9                     | 8,5 | 25   | 10 | 4,2 | 2,3 | <b>Mavi / Blue</b>   | 100                                   |
| 8018336620                | <b>BFT 5050</b>          | 4,0 - 6,0                                  | 4,9                     | 8,5 | 28   | 13 | 5,6 | 3,4 | <b>Sarı / Yellow</b> | 50                                    |

\* Malzeme: Bakır, Kalay Kaplı  
\* Material: Copper, Tin Plated - PVC

## Erkek Pabuçlar

Bullet Male Terminals

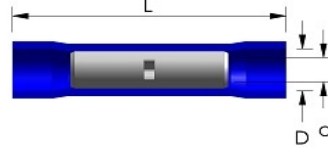


| Ürün Kodu<br>Product Code | Ürün Adı<br>Product Name | Kesit<br>Cross Sect.<br>(mm <sup>2</sup> ) | Ölçüler Dimensions (mm) |     |      |    |     |     | Renk<br>Color        | Amb. Mik.<br>Pack. Qty<br>(Adet/Pcs.) |
|---------------------------|--------------------------|--|-------------------------|-----|------|----|-----|-----|----------------------|---------------------------------------|
|                           |                          |  | B                       | F   | L    | E  | D   | d1  |                      |                                       |
| 8018336700                | <b>BMT 1040</b>          | 0,5 - 1,5                                  | 4                       | 8,5 | 21   | 10 | 3,5 | 1,7 | <b>Kırmızı</b> / Red | 100                                   |
| 8018336710                | <b>BMT 2050</b>          | 1,5 - 2,5                                  | 5                       | 9   | 21,5 | 10 | 4,2 | 2,3 | <b>Mavi</b> / Blue   | 100                                   |
| 8018336720                | <b>BMT 5050</b>          | 4,0 - 6,0                                  | 5                       | 9   | 24,5 | 13 | 5,6 | 3,4 | <b>Sarı</b> / Yellow | 100                                   |

\* Malzeme: Bakır, Kalay Kaplı  
\* Material: Copper, Tin Plated - PVC

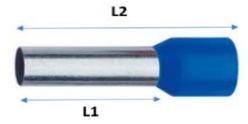
## Ek Muflar

Insulated Butt Terminals



| Ürün Kodu<br>Product Code | Ürün Adı<br>Product Name | Kesit<br>Cross Sect.<br>(mm <sup>2</sup> ) | Ölçüler Dimensions (mm) |     |     | Renk<br>Color        | Amb. Mik.<br>Pack. Qty<br>(Adet/Pcs.) |
|---------------------------|--------------------------|--|-------------------------|-----|-----|----------------------|---------------------------------------|
|                           |                          |  | L                       | D   | d   |                      |                                       |
| 8018336500                | <b>IBT 251</b>           | 0,5 - 1,5                                  | 24,5                    | 4,3 | 1,7 | <b>Kırmızı</b> / Red | 100                                   |
| 8018336510                | <b>IBT 252</b>           | 1,5 - 2,5                                  | 24,5                    | 4,8 | 2,3 | <b>Mavi</b> / Blue   | 100                                   |
| 8018336520                | <b>IBT 256</b>           | 4,0 - 6,0                                  | 27                      | 6,2 | 3,4 | <b>Sarı</b> / Yellow | 75                                    |

\* Malzeme: Bakır, Kalay Kaplı  
\* Material: Copper, Tin Plated - PVC



## İzoleli Kablo Yüksükleri

Insulated End Sleeves



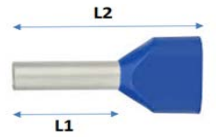
| Ürün Kodu<br>Product Code | Ürün Adı<br>Product Name                | Ölçüler<br>Dimensions (mm) |    | Kesit<br>Cross Sect.<br>(mm <sup>2</sup> ) | AWG | Norm           | Amb. Mik.<br>Pack. Qty<br>(Adet/Pcs.) |
|---------------------------|---|----------------------------|----|--|-----|----------------|---------------------------------------|
|                           |   | L1                         | L2 |  |     |                |                                       |
| 8017335000                | IES 0,50/8 Turuncu / Orange             | 8                          | 12 | 0,5  | 20  | Alman / German | 1.000                                 |
| 8017335010                | IES 0,75/8 Beyaz / White                | 8                          | 14 | 0,75                                       | 18  | Alman / German | 1.000                                 |
| 8017335020                | IES 1,0/8 Sarı / Yellow                 | 8                          | 14 | 1  | 17  | Alman / German | 1.000                                 |
| 8017335030                | IES 1,5/8 Kırmızı / Red                 | 8                          | 14 | 1,5  | 16  | Alman / German | 1.000                                 |
| 8017335040                | IES 2,5/8 Mavi / Blue                   | 8                          | 14 | 2,5  | 14  | Alman / German | 500                                   |
| 8017335050                | IES 4,0/10 Gri / Gray                   | 10                         | 17 | 4  | 12  | Alman / German | 500                                   |
| 8017335060                | IES 6,0/12 Siyah / Black                | 12                         | 20 | 6  | 10  | Alman / German | 250                                   |
| 8017335070                | IES 10,0/12 Fildişi / Ivory             | 12                         | 22 | 10   | 8   | Alman / German | 100                                   |
| 8017335080                | IES 16,0/12 Yeşil / Green               | 12                         | 24 | 16   | 6   | Alman / German | 100                                   |
| 8017335090                | IES 25,0/16 Kahve / Brown               | 16                         | 28 | 25   | 4   | Alman / German | 50                                    |
| 8017335100                | IES 35,0/16 Bej / Beige                 | 16                         | 30 | 35   | 2   | Alman / German | 50                                    |
| 8017335110                | IES 50,0/20 Zeytin Yeşili / Olive Green | 20                         | 36 | 50   | 1   | Alman / German | 25                                    |

| Ürün Kodu<br>Product Code | Ürün Adı<br>Product Name    | Ölçüler<br>Dimensions (mm) |    | Kesit<br>Cross Sect.<br>(mm <sup>2</sup> ) | AWG | Norm             | Amb. Mik.<br>Pack. Qty<br>(Adet/Pcs.) |
|---------------------------|-----------------------------|----------------------------|----|--|-----|------------------|---------------------------------------|
|                           |                             | L1                         | L2 |  |     |                  |                                       |
| 8017335005                | IES 0,50/8 Beyaz / White    | 8                          | 12 | 0,5  | 20  | Fransız / French | 1.000                                 |
| 8017335015                | IES 0,75/8 Mavi / Blue      | 8                          | 14 | 0,75                                       | 18  | Fransız / French | 1.000                                 |
| 8017335025                | IES 1,0/8 Kırmızı / Red     | 8                          | 14 | 1  | 17  | Fransız / French | 1.000                                 |
| 8017335035                | IES 1,5/8 Siyah / Black     | 8                          | 14 | 1,5  | 16  | Fransız / French | 1.000                                 |
| 8017335045                | IES 2,5/8 Gri / Gray        | 8                          | 14 | 2,5  | 14  | Fransız / French | 500                                   |
| 8017335055                | IES 4,0/10 Turuncu / Orange | 10                         | 17 | 4  | 12  | Fransız / French | 500                                   |
| 8017335065                | IES 6,0/12 Yeşil / Green    | 12                         | 20 | 6  | 10  | Fransız / French | 250                                   |
| 8017335075                | IES 10,0/12 Kahve / Brown   | 12                         | 22 | 10   | 8   | Fransız / French | 100                                   |
| 8017335085                | IES 16,0/12 Bej / Beige     | 12                         | 24 | 16   | 6   | Fransız / French | 100                                   |
| 8017335095                | IES 25,0/16 Siyah / Black   | 16                         | 28 | 25   | 4   | Fransız / French | 50                                    |
| 8017335105                | IES 35,0/16 Kırmızı / Red   | 16                         | 30 | 35   | 2   | Fransız / French | 50                                    |
| 8017335115                | IES 50,0/20 Mavi / Blue     | 20                         | 36 | 50   | 1   | Fransız / French | 25                                    |

\* Malzeme: Bakır, Kalay Kaplı

\* Material: Copper, Tin Plated - PVC





## Çift Girişli Kablo Yüksükleri

Twin Cord End Sleeves

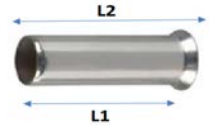


| Ürün Kodu<br>Product Code | Ürün Adı<br>Product Name      | Ölçüler Dimensions<br>(mm) |    | Kesit<br>Cross Sect.<br>(mm <sup>2</sup> ) | Norm           | Amb. Mik.<br>Pack. Qty<br>(Adet/Pcs.) |
|---------------------------|-------------------------------|----------------------------|----|--|----------------|---------------------------------------|
|                           |                               | L1                         | L2 |  |                |                                       |
| 8017335400                | IES 2x0,50/8 Turuncu / Orange | 8                          | 14 | 2 x 0,5                                    | Alman / German | 1.000                                 |
| 8017335410                | IES 2x0,75/8 Beyaz / White    | 8                          | 14 | 2 x 0,75                                   | Alman / German | 500                                   |
| 8017335420                | IES 2x1,0/8 Sarı / Yellow     | 8                          | 14 | 2 x 1,0                                    | Alman / German | 500                                   |
| 8017335430                | IES 2x1,5/8 Kırmızı / Red     | 8                          | 14 | 2 x 1,5                                    | Alman / German | 500                                   |
| 8017335440                | IES 2x2,5/10 Mavi / Blue      | 10                         | 14 | 2 x 2,5                                    | Alman / German | 250                                   |
| 8017335450                | IES 2x4,0/12 Gri / Gray       | 12                         | 17 | 2 x 4,0                                    | Alman / German | 200                                   |
| 8017335460                | IES 2x6,0/14 Siyah / Black    | 14                         | 20 | 2 x 6,0                                    | Alman / German | 100                                   |
| 8017335470                | IES 2x10,0/14 Fildişi / Ivory | 14                         | 27 | 2 x 10                                     | Alman / German | 50                                    |
| 8017335480                | IES 2x16,0/14 Yeşil / Green   | 14                         | 31 | 2 x 16                                     | Alman / German | 50                                    |

| Ürün Kodu<br>Product Code | Ürün Adı<br>Product Name      | Ölçüler Dimensions<br>(mm) |    | Kesit<br>Cross Sect.<br>(mm <sup>2</sup> ) | Norm             | Amb. Mik.<br>Pack. Qty<br>(Adet/Pcs.) |
|---------------------------|-------------------------------|----------------------------|----|--|------------------|---------------------------------------|
|                           |                               | L1                         | L2 |  |                  |                                       |
| 8017335405                | IES 2x0,50/8 Beyaz / White    | 8                          | 14 | 2 x 0,5                                    | Fransız / French | 1.000                                 |
| 8017335415                | IES 2x0,75/8 Mavi / Blue      | 8                          | 14 | 2 x 0,75                                   | Fransız / French | 500                                   |
| 8017335425                | IES 2x1,0/8 Kırmızı / Red     | 8                          | 14 | 2 x 1,0                                    | Fransız / French | 500                                   |
| 8017335435                | IES 2x1,5/8 Siyah / Black     | 8                          | 14 | 2 x 1,5                                    | Fransız / French | 500                                   |
| 8017335445                | IES 2x2,5/10 Gri / Gray       | 10                         | 14 | 2 x 2,5                                    | Fransız / French | 250                                   |
| 8017335455                | IES 2x4,0/12 Turuncu / Orange | 12                         | 17 | 2 x 4,0                                    | Fransız / French | 200                                   |
| 8017335465                | IES 2x6,0/14 Yeşil / Green    | 14                         | 20 | 2 x 6,0                                    | Fransız / French | 100                                   |
| 8017335475                | IES 2x10,0/14 Kahve / Brown   | 14                         | 27 | 2 x 10                                     | Fransız / French | 50                                    |
| 8017335485                | IES 2x16,0/14 Bej / Beige     | 14                         | 31 | 2 x 16                                     | Fransız / French | 50                                    |

\* Malzeme: Bakır, Kalay Kaplı  
\* Material: Copper, Tin Plated - PVC





## İzolesiz Kablo Yüksükleri

Non-insulated End Sleeves



| Ürün Kodu<br>Product Code | Ürün Adı<br>Product Name | Ölçüler<br>Dimensions (mm) |    | Kesit<br>Cross Sect.<br>(mm <sup>2</sup> ) | AWG | Amb. Mik.<br>Pack. Qty<br>(Adet/Pcs.) |
|---------------------------|--------------------------|----------------------------|----|--|-----|---------------------------------------|
|                           |                          | L1                         | L2 |  |     |                                       |
| 8017335220                | <b>ES 0,50/10</b>        | 8                          | 10 | 0,50                                       | 20  | 2.000                                 |
| 8017335230                | <b>ES 0,75/10</b>        | 8                          | 10 | 0,75                                       | 18  | 2.000                                 |
| 8017335240                | <b>ES 1,0/10</b>         | 8                          | 10 | 1,00                                       | 17  | 2.000                                 |
| 8017335250                | <b>ES 1,5/10</b>         | 8                          | 10 | 1,50                                       | 15  | 2.000                                 |
| 8017335260                | <b>ES 2,5/12</b>         | 8                          | 12 | 2,50                                       | 13  | 2.000                                 |
| 8017335270                | <b>ES 4,0/12</b>         | 10                         | 12 | 4,00                                       | 11  | 1.000                                 |
| 8017335280                | <b>ES 6,0/12</b>         | 10                         | 12 | 6,00                                       | 9   | 500                                   |
| 8017335290                | <b>ES 10,0/15</b>        | 12                         | 15 | 10,00                                      | 7   | 200                                   |
| 8017335300                | <b>ES 16,0/15</b>        | 12                         | 15 | 16,00                                      | 5   | 200                                   |
| 8017335310                | <b>ES 25,0/16</b>        | 16                         | 16 | 25,00                                      | 4   | 100                                   |
| 8017335320                | <b>ES 35,0/16</b>        | 16                         | 16 | 35,00                                      | 2   | 100                                   |
| 8017335330                | <b>ES 50,0/20</b>        | 20                         | 20 | 50,00                                      | 1   | 50                                    |

\* Malzeme: Bakır, Kalay Kaplı

\* Material: Copper, Tin Plated - PVC

